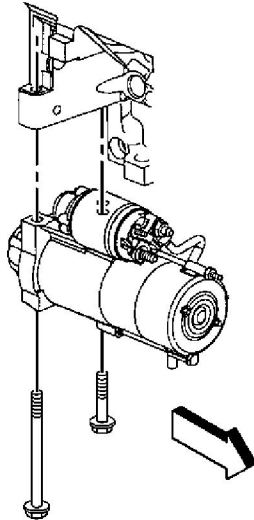
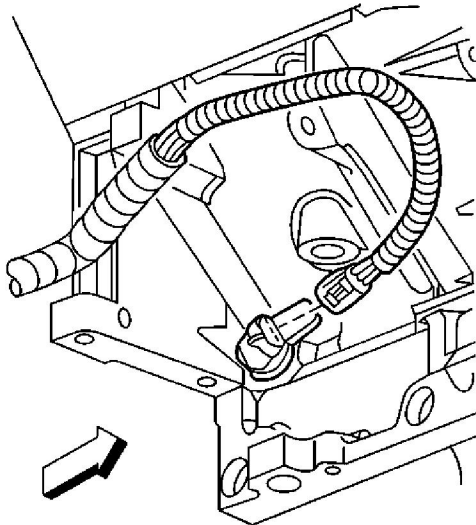


## Crankshaft Position Sensor Replacement

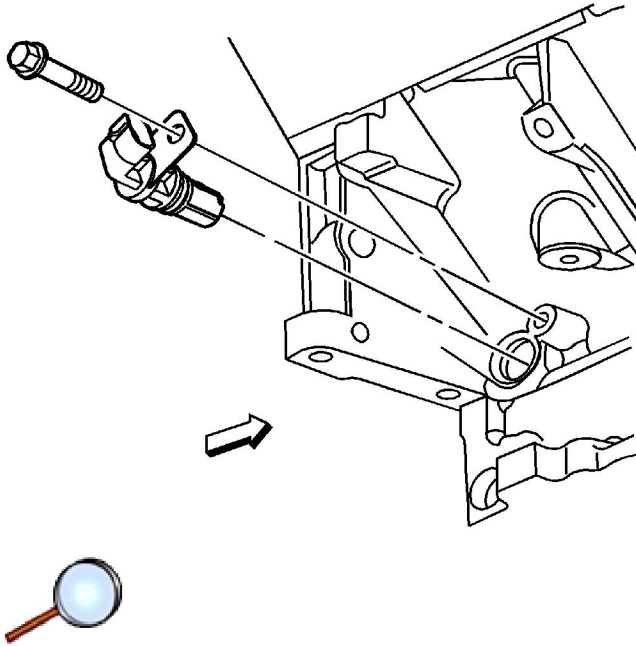
### Removal Procedure



1. Raise the vehicle. Refer to [Lifting and Jacking the Vehicle](#) in General Information.
2. Remove the starter. Refer to [Starter Motor Replacement](#) in Engine Electrical.



3. Disconnect the crankshaft position (CKP) sensor electrical connector.

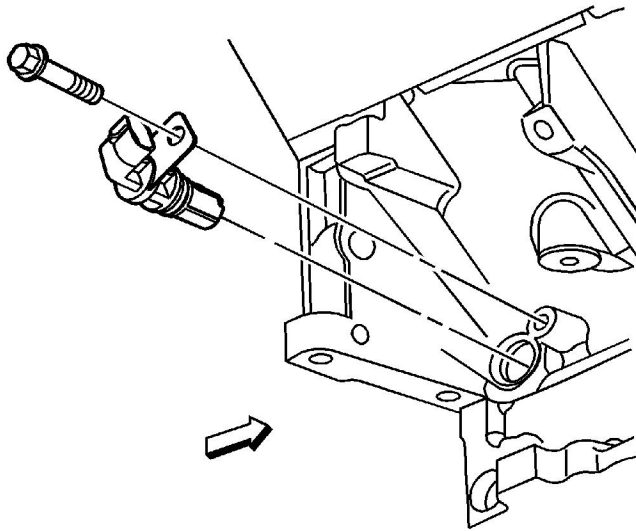


4. Remove the CKP sensor retaining bolt.
5. Remove the CKP sensor.

## Installation Procedure

1. Install the CKP sensor.

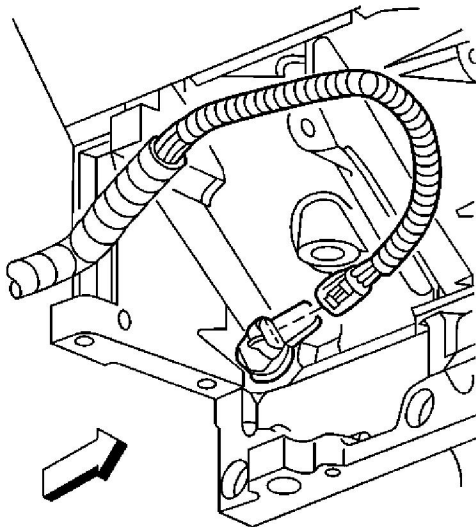
**Notice:** Use the correct fastener in the correct location. Replacement fasteners must be the correct part number for that application. Fasteners requiring replacement or fasteners requiring the use of thread locking compound or sealant are identified in the service procedure. Do not use paints, lubricants, or corrosion inhibitors on fasteners or fastener joint surfaces unless specified. These coatings affect fastener torque and joint clamping force and may damage the fastener. Use the correct tightening sequence and specifications when installing fasteners in order to avoid damage to parts and systems.



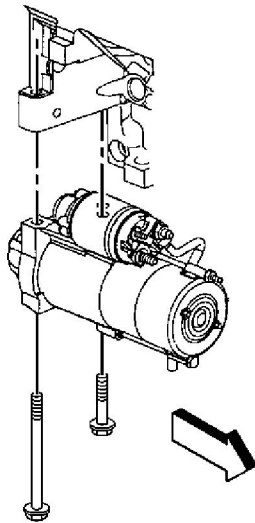
2. Install the CKP sensor retaining bolt.

**Tighten**

Tighten the CKP sensor to 25 N·m (18 lb ft).



3. Connect the CKP sensor electrical connector.



4. Install the starter. Refer to [Starter Motor Replacement](#) in Engine Electrical.
5. Lower the vehicle.
6. Perform the CKP System Variation Learn Procedure. Refer to [Crankshaft Position System Variation Learn](#) .